

## AK790/..-5.0-V-GREEN



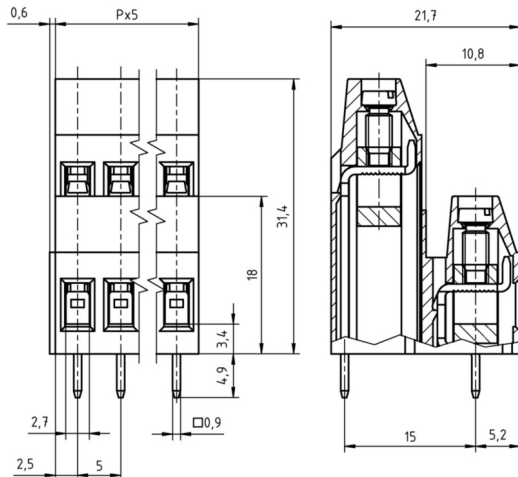
## Technical Data

| Wire sizes                |                      | Insulating Material                |                 |
|---------------------------|----------------------|------------------------------------|-----------------|
| Solid min                 | 0.2 mm <sup>2</sup>  | Material                           | PA 6.6          |
| Solid max                 | 4.0 mm <sup>2</sup>  | Flammability Class                 | UL 94 V-0       |
| Stranded (flexible) min   | 0.2mm <sup>2</sup>   | <b>Temperatures</b>                |                 |
| Stranded (flexible) max   | 2.5 mm <sup>2</sup>  | Operating Temperature              | -30 °C - 105 °C |
| Stranded with Ferrule min | 0.25 mm <sup>2</sup> | Store Temperature                  | -40 °C - 105 °C |
| Stranded with Ferrule max | 2.5 mm <sup>2</sup>  | <b>Wave Soldering Process</b>      |                 |
| <b>Dimensions</b>         |                      | Soldering Temperature, recommended | 265 °C          |
| Stripped Length           | 8.0 mm               | Peak Soldering Time, recommended   | 3-4 s           |
| PCB Hole Diameter         | 1.3 mm               | <b>Reflow Process</b>              |                 |
| <b>Materials</b>          |                      | Soldering Temperature, recommended | -               |
| Clamp                     | Brass                | Peak Soldering Time, recommended   | -               |
| Screw                     | Steel                |                                    |                 |
| Solder Tab                | Copper Alloy         |                                    |                 |

## Colours

|  |                               |
|--|-------------------------------|
|   | GREEN, RAL 6018               |
|  | LIGHT GREEN, similar RAL 6018 |





Colours according to RAL, there may be variations on colour due to production conditions. Special colours on request.



## Order Data (Spacing 5.0 mm)

| Poles | Width (mm) | Article Designation  | Article Number | PU |
|-------|------------|----------------------|----------------|----|
| 2     | 10.60      | AK790/2-5.0-V-GREEN  | 50790020201 D  | 50 |
| 3     | 15.60      | AK790/3-5.0-V-GREEN  | 50790030201 D  | 50 |
| 4     | 20.60      | AK790/4-5.0-V-GREEN  | 50790040201 D  | 50 |
| 5     | 25.60      | AK790/5-5.0-V-GREEN  | 50790050201 D  | 50 |
| 6     | 30.60      | AK790/6-5.0-V-GREEN  | 50790060201 D  | 50 |
| 7     | 35.60      | AK790/7-5.0-V-GREEN  | 50790070201 D  | 50 |
| 8     | 40.60      | AK790/8-5.0-V-GREEN  | 50790080201 D  | 50 |
| 9     | 45.60      | AK790/9-5.0-V-GREEN  | 50790090201 D  | 50 |
| 10    | 50.60      | AK790/10-5.0-V-GREEN | 50790100201 D  | 50 |
| 11    | 55.60      | AK790/11-5.0-V-GREEN | 50790110201 D  | 50 |
| 12    | 60.60      | AK790/12-5.0-V-GREEN | 50790120201 D  | 50 |

## Accessoires

| Figure   | Designation  | Article Number       |
|--|--|----------------------|
|    | Bridge, 2-pole, insulated, BRI/2-5.0/5.08-LIGHT GREY | Art.-Nr. 50000000006 |
|  | Bridge, 3-pole, insulated, BRI/3-5.0/5.08-LIGHT GREY | Art.-Nr. 50000000007 |
|  | Bridge, 2-pole, BR/2-5.0/5.08-L7.0                   | Art.-Nr. 50000000008 |
|   | Screw Cover SC-AK700-YELLOW                          | Art.-Nr. 50700000004 |

See pages 282 ff for detail and general accessories and see pages 12/13 concerning services.

## Ratings

| UseGroup        | cRU <sup>®</sup> US |           |           | VDE                 |                     |
|-----------------|---------------------|-----------|-----------|---------------------|---------------------|
|                 | B                   | C         | D         |                     |                     |
| Rated Voltage   | 300 V               | 150 V     | 300 V     | 250 V               |                     |
| Rated Current   | 20 A                | 20 A      | 10 A      | 24 A                |                     |
| Rated Wire Size |                     |           |           | min                 | max                 |
| - solid         | AWG 30-12           | AWG 30-12 | AWG 30-12 | 0.5 mm <sup>2</sup> | 4.0 mm <sup>2</sup> |
| - stranded      | AWG 30-12           | AWG 30-12 | AWG 30-12 | 0.5 mm <sup>2</sup> | 2.5 mm <sup>2</sup> |
| Torque          | 0.45 Nm             | 0.45 Nm   | 0.45 Nm   | 0.50 Nm             |                     |
| Screw Size      | M3                  | M3        | M3        | M3                  |                     |
| Test Voltage    | 1.60 kV             | 1.30 kV   | 1.60 kV   | 2.0 kV              |                     |