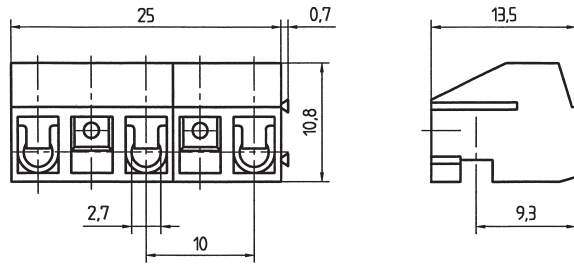


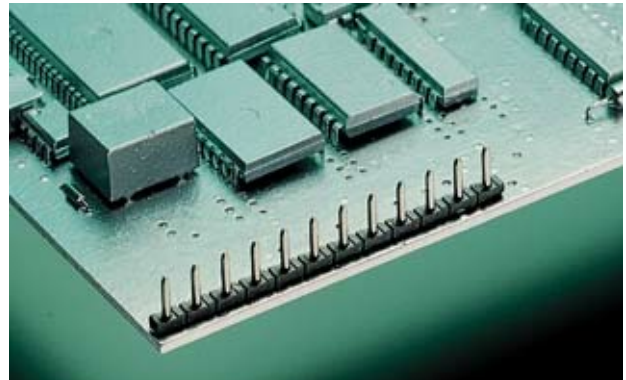
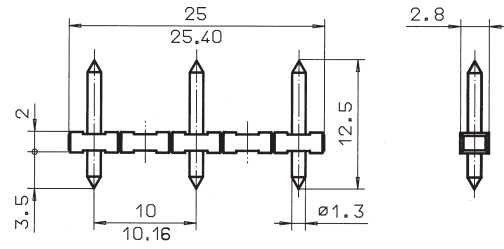
AK 130



AK 130/.. - 10,0 - grey

**2-6 poles, Spacing 10,0 mm
insert required no. of poles ..**

STL(Z) 130 VERTICAL






STL(Z) 130/.. - 10,0 (10,16) - V - black

**2-12 poles, Spacing 10,0 mm or 10,16 mm
insert required no. of poles ..**

Ratings:

*Approval pending

| |  |  |  * |
|--|---|---|---|
| | UL 1059 | CSA 22.2 No. 158 | DIN VDE 0627 |
| Rated Voltage | 300 V | 300 V | 630 V |
| Rated Current | 10 A | 10 A | 10 A (T60) |
| Wire Size | AWG 22-14 | AWG 22-14 | 1,5 mm² |
| Rating Impulse Voltage/Dirt Level | | | 8 kV/3 |
| Rated Torque / Screw Size | | | 0,4 Nm/M2,6 |
| Max. Rated Cross Section | | | |
| Single Wire (solid) | | | 1,5 mm ² |
| Stranded Wire (flexible) | | | 1,0 mm ² |
| Stranded wire with Ferrules | | | 1,0 mm ² |

Dimensions




| | |
|-----------------|---------|
| Spacing | 10,0 mm |
| Stripped Length | 6,0 mm |

Materials

| | |
|---------------------|--------------|
| Insulating Material | PA |
| Flammability Class | UL94 V-0 |
| Temperature Range | -30°C/+105°C |
| Terminal Block | CuZn |
| Contact | CuBe |
| Colour | |
| grey | RAL 7016 |

Ratings:

* Approval pending

| |  |  |  * |
|--|---|---|---|
| | UL 1059 | CSA 22.2 No. 158 | DIN VDE 0627 |
| Rated Voltage | 300 V | 300 V | 630 V |
| Rated Current | 10 A | 10 A | 10 A (T60) |
| Rating Impulse Voltage/Dirt Level | | | 8 kV/3 |

Dimensions

| | |
|-------------------|--------------------|
| Spacing | 10,0 mm (10,16 mm) |
| PCB Hole Diameter | 1,5 mm |

Materials

| | |
|---------------------|--------------|
| Insulating Material | PA |
| Flammability Class | UL94 V-0 |
| Temperature Range | -30°C/+105°C |
| Contact Pin | CuZn |
| Colour | |
| black | RAL 9011 |